

Empty Squares:

0163 £	white
0164 ▩	dark

Top/Bottom Borders:

0166	top
0161	bottom

Left/Right Borders:

0162 ¢	left
0165 ¥	right

Standard:

Rotate 90:

Rotate 180:

Rotate 270:

Chameleon:

Neutral:

0048 0		Kings
0049 1		
0050 2		
0051 3		

0052 4	
0053 5	
0054 6	
0055 7	

0056 8	
0057 9	
0065 A	
0066 B	

0067 C	
0068 D	
0069 E	
0070 F	

0236 ì	
0237 í	
0238 î	
0239 ï	
0240 ð	
0241 ñ	
0242 ò	
0243 ó	
0244 ô	
0245 õ	
0246 ö	
0247 ÷	

0071 G		Queens
0072 H		
0073 I		
0074 J		

0075 K	
0076 L	
0077 M	
0078 N	

0079 O	
0080 P	
0081 Q	
0082 R	

0083 S	
0084 T	
0085 U	
0086 V	

0206 Î	
0207 Ï	
0208 Ð	
0209 Ñ	

0087 W		Rooks
0088 X		
0089 Y		
0090 Z		

0097 a	
0098 b	
0099 c	
0100 d	

0101 e	
0102 f	
0103 g	
0104 h	

0105 i	
0106 j	
0107 k	
0108 l	

0210 Ò	
0211 Ó	
0212 Ô	
0213 Õ	

Special:

0109 m		Bishops
0110 n		
0111 o		
0112 p		

0113 q	
0114 r	
0115 s	
0116 t	

0117 u	
0118 v	
0119 w	
0120 x	

0121 y	
0122 z	
0167 §	
0168 ¨	

0214 Ö	
0215 ×	
0216 Ø	
0217 Ù	

0226 é	
0227 ê	
0228 ë	
0229 ø	
0230 ù	
0231 ú	
0232 û	
0233 ü	
0234 ý	
0235 ë	
0248 ø	
0249 ù	
0250 ú	
0251 û	
0252 ü	
0253 ý	
0254 ð	
0255 ÿ	

0169 ©		Knights
0170 ª		
0171 «		
0172 ¬		

0203 Ě	
0174 ®	
0175 ¯	
0176 °	

0177 ±	
0178 ²	
0179 ³	
0180 ´	

0181 µ	
0182 ¶	
0183 ·	
0184 ¸	

0218 Ú	
0219 Û	
0220 Ü	
0221 Ý	

0185 ¹		Pawns
0186 º		
0187 »		
0188 ¼		

0189 ½	
0190 ¾	
0191 ¿	
0192 À	

0193 Á	
0194 Â	
0195 Ã	
0196 Ä	

0197 Å	
0198 Æ	
0199 Ç	
0200 È	

0222 Þ	
0223 ß	
0224 à	
0225 á	

Symbols

0201 É	
0202 Ê	
0205 Í	

Note: Each box above contains 3 items: (1) 4-digit ASCII code; (2) Arial font character equivalent; and (3) GC2004D chess figure equivalent. To generate a chess figure, hold down the ALT key and enter the 4-digit code on your numeric keypad. Make sure your NumLock is ON. Notice that each figure has a white-square and black-square representation. **The GC font series was developed by David L. Brown for The Good Companions, and is used exclusively for diagrams on www.StrateGems.org.**

Rotate 45:**Rotate 135:****Rotate 225:****Rotate 315:****Neutral 0/90:****Neutral 180/270:**

0048 0	Kings	0052 4	0056 8	0067 C	0195 Ã	0199 Ç
0049 1		0053 5	0057 9	0068 D	0196 Ä	0200 È
0050 2		0054 6	0065 A	0069 E	0197 Å	0201 É
0051 3		0055 7	0066 B	0070 F	0198 Æ	0202 Ê
0071 G	Queens	0075 K	0079 O	0083 S		0207 Ï
0072 H		0076 L	0080 P	0084 T		0208 Ð
0073 I		0077 M	0081 Q	0085 U	0205 Í	0209 Ñ
0074 J		0078 N	0082 R	0086 V	0206 Î	0210 Ò
0087 W	Rooks	0097 a	0101 e	0105 i		0213 Ö
0088 X		0098 b	0102 f	0106 j		0214 Õ
0089 Y		0099 c	0103 g	0107 k	0211 Ó	0215 ×
0090 Z		0100 d	0104 h	0108 l	0212 Ô	0216 Ø
0109 m	Bishops	0113 q	0117 u	0121 y		0219 Û
0110 n		0114 r	0118 v	0122 z		0220 Ü
0111 o		0115 s	0119 w	0161 ÿ	0217 Ù	0221 Ý
0112 p		0116 t	0120 x	0162 ç	0218 Ú	0222 Þ
0163 £	Knights	0167 §	0171 «	0175 ¯		0225 á
0164 ¤		0168 ¨	0172 ¬	0176 °		0226 â
0165 ¥		0169 ©	0255 ÿ	0177 ±	0223 ß	0227 ä
0166 ¦		0170 ª	0174 ®	0178 ²	0224 à	0228 å
0179 ³	Pawns	0183 ·	0187 »	0191 ¿		0231 ç
0180 ´		0184 ,	0188 ¼	0192 À		0232 è
0181 µ		0185 ¹	0189 ½	0193 Á	0229 à	0233 é
0182 ¶		0186 °	0190 ¾	0194 Â	0230 æ	0234 ê
	Special	0235 ë	0239 ï	0243 ó	0247 ÷	0251 û
		0236 ì	0240 ð	0244 ô	0248 ø	0252 ü
		0237 í	0241 ñ	0245 õ	0249 ù	0253 ý
		0238 î	0242 ò	0246 ö	0250 ú	0254 þ

Note:

Each box above contains 3 items: (1) 4-digit ASCII code; (2) Arial font character equivalent; and (3) GC2004X chess figure equivalent. To generate a chess figure, hold down the ALT key and enter the 4-digit code on your numeric keypad. Make sure your NumLock is ON. Notice that each figure has a white-square and black-square representation. **The GC font series was developed by David L. Brown for The Good Companions, and is used exclusively for diagrams on www.StrateGems.org.**

Empty Squares:

0079 O	white
0080 P	dark

Double Borders:

0076 L	top
0083 S	bottom
0078 N	left
0081 Q	right

Corners:

0075 K	.
0077 M	·
0082 R	·
0084 T	·

left/right borders:

0085 U	
0086 V	

2-Sided Edges:

0087 W	
0088 X	
0089 Y	
0090 Z	
0101 e	
0102 f	

3-Sided Edges:

0097 a	
0098 b	
0099 c	
0100 d	

Arrows:

0198 Æ	↑
0199 Ç	←
0200 È	↓
0201 É	↗
0202 Ê	↻
0203 Ë	↻

0056 8	♠	Special Characters
0057 9	♣	
0065 A	♠	
0066 B	♣	

0052 4	♠
0053 5	♣
0054 6	♠
0055 7	♣

0048 0	♠
0049 1	♣
0050 2	♠
0051 3	♣

0067 C	♠
0068 D	♣
0069 E	♠
0070 F	♣

0071 G	♠
0072 H	♣
0073 I	♠
0074 J	♣

0194 Å	♠
0195 Ä	♣
0196 Å	♠
0197 Å	♣

Row Labels

0103 g	1
0104 h	2
0105 i	3
0106 j	4
0107 k	5
0108 l	6
0109 m	7
0110 n	8
0111 o	9

<Single>

Column Labels

0112 p	10
0113 q	11
0114 r	12
0115 s	13
0116 t	14
0117 u	15
0118 v	16
0119 w	17
0120 x	18

0121 y	19
0122 z	20
0161 j	21
0162 ç	22
0163 £	23
0164 ¤	24
0165 ¥	25
0166 ¦	26

0167 §	a
0168 ¨	b
0169 ©	c
0170 ª	d
0171 «	e
0172 ¬	f
0174 ®	g
0175 ¯	h
0176 °	i

Column Labels

0177 ±	a
0178 ²	b
0179 ³	c
0180 ´	d
0181 µ	e
0182 ¶	f
0183 ·	g
0184 ,	h
0185 ¹	i

0186 °	a
0187 »	b
0188 ¼	c
0189 ½	d
0190 ¾	e
0191 ¿	f
0192 Å	g
0193 Á	h

0204 Ì	1
0205 Í	2
0206 Î	3
0207 Ï	4
0208 Ð	5
0209 Ñ	6
0210 Ò	7
0211 Ó	8
0212 Ô	9

<Double>

0213 Õ	10
0214 Ö	11
0215 ×	12
0216 Ø	13
0217 Ù	14
0218 Ú	15
0219 Û	16
0220 Ü	17
0221 Ý	18

0222 Þ	19
0223 ß	20
0224 à	21
0225 á	22
0226 â	23
0227 ã	24
0228 ä	25
0229 å	26

0204 Ì	1
0205 Í	2
0206 Î	3
0207 Ï	4
0208 Ð	5
0209 Ñ	6
0210 Ò	7
0211 Ó	8
0212 Ô	9

0213 Õ	10
0214 Ö	11
0215 ×	12
0216 Ø	13
0217 Ù	14
0218 Ú	15
0219 Û	16
0220 Ü	17
0221 Ý	18

0222 Þ	19
0223 ß	20
0224 à	21
0225 á	22
0226 â	23
0227 ã	24
0228 ä	25
0229 å	26

Note: Each box above contains 3 items: (1) 4-digit ASCII code; (2) Arial font character equivalent; and (3) GC2004Y chess figure equivalent. To generate a chess figure, hold down the ALT key and enter the 4-digit code on your numeric keypad. Make sure your NumLock is ON. Notice that each figure has a white-square and black-square representation. **The GC font series was developed by David L. Brown for The Good Companions, and is used exclusively for diagrams on www.StrateGems.org.**

Creating a blank diagram:

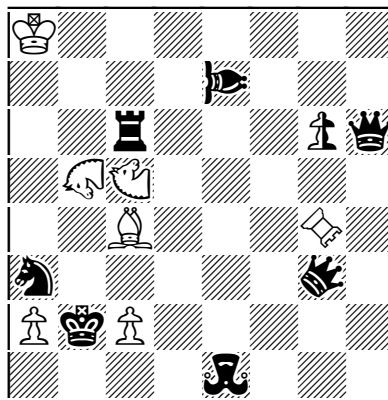
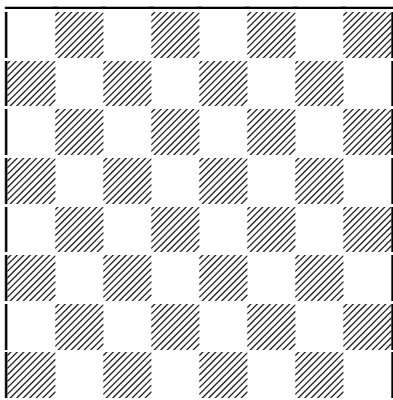
To manually generate a diagram using GC2004 series fonts, you can copy the block of characters below to a Word document or a rich-text file:

```
£iiiiiii£  
♙♘♗♖♕♔♓  
♚♛♜♝♞♟♠♡  
♙♘♗♖♕♔♓  
♚♛♜♝♞♟♠♡  
♙♘♗♖♕♔♓  
♚♛♜♝♞♟♠♡  
♙♘♗♖♕♔♓  
♚♛♜♝♞♟♠♡  
£iiiiiii£
```

Or, you can manually enter the ASCII codes below in a Word document or rich-text file:

line 1 (top border): 0163 + 0166 + 0166 + 0166 + 0166 + 0166 + 0166 + 0166 + 0166 + 0163
line 2 (8th rank): 0162 + 0163 + 0164 + 0163 + 0164 + 0163 + 0164 + 0163 + 0164 + 0165
line 3 (7th rank): 0162 + 0164 + 0163 + 0164 + 0163 + 0164 + 0163 + 0164 + 0163 + 0165
line 4-9 (6th through 1st ranks): repeat line 2 and line 3 above
line 10 (bottom): 0163 + 0161 + 0161 + 0161 + 0161 + 0161 + 0161 + 0161 + 0161 + 0163

Once you have this block of characters copied (or keyed), change the font to GC2004D.
A blank diagram should now appear; see below (left).



Entering a chess position:

Set your Insert key to OFF (so that Overwrite is in effect). Now, for each chess figure you want to enter, do the following:

- 1) Find the chess figure you want to enter on the quick-reference pages (above).
- 2) Note which font (GC2004D, GC2004X, GC2004Y) is needed for this figure.
- 3) Note which square color (white or black) this figure will be placed on.
- 4) Note the ASCII code for that figure on the square-color desired.
- 5) Move your cursor to the appropriate square.
- 6) Type the 4-digit ASCII code on your numeric keypad.
- 7) If figure is under GC2004X or GC2004Y font, change that figure's font in the diagram.
- 8) The chess figure should now appear, on the proper square 'background'.
- 9) Repeat for the entire position. The above diagram (right) shows a finished example.

If you make a mistake (ie. enter the wrong ASCII code, or on the wrong square), you can 'erase' a square by entering ASCII code 0163 (empty white square) or 0164 (empty black square). For more help, contact dan@StrateGems.org